

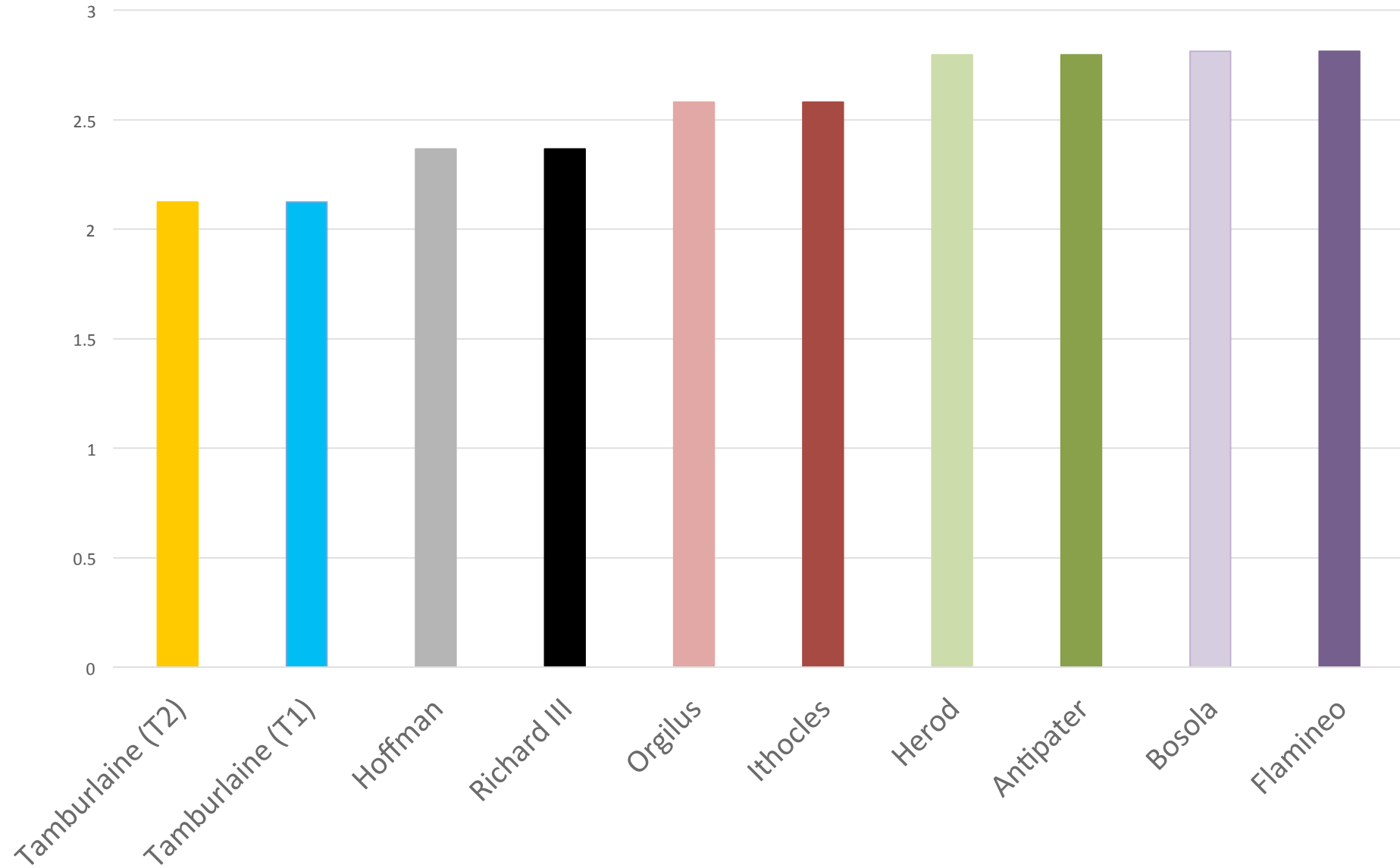


Hugh Craig

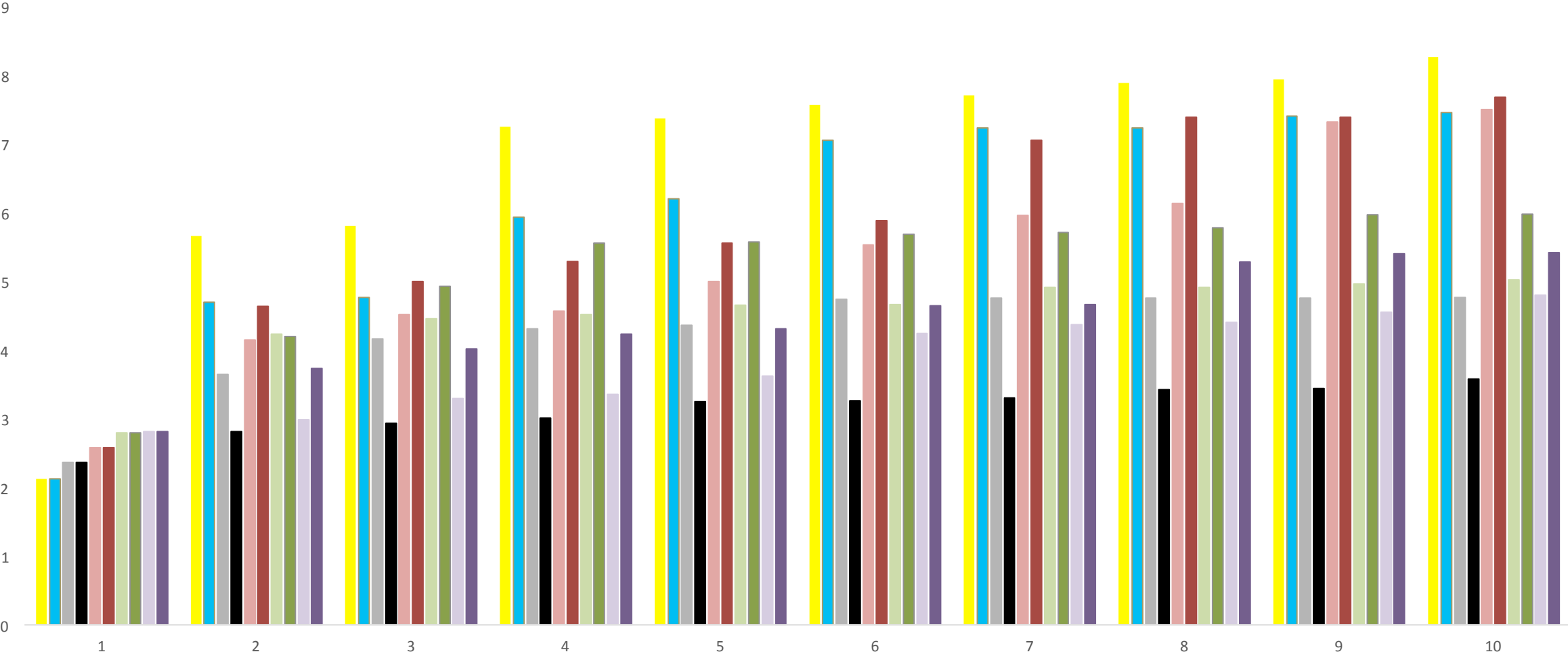
Centre for 21st Century Humanities

University of Newcastle, Australia

Characters with a very close match to another character (Euclidean distances, 100 function words)

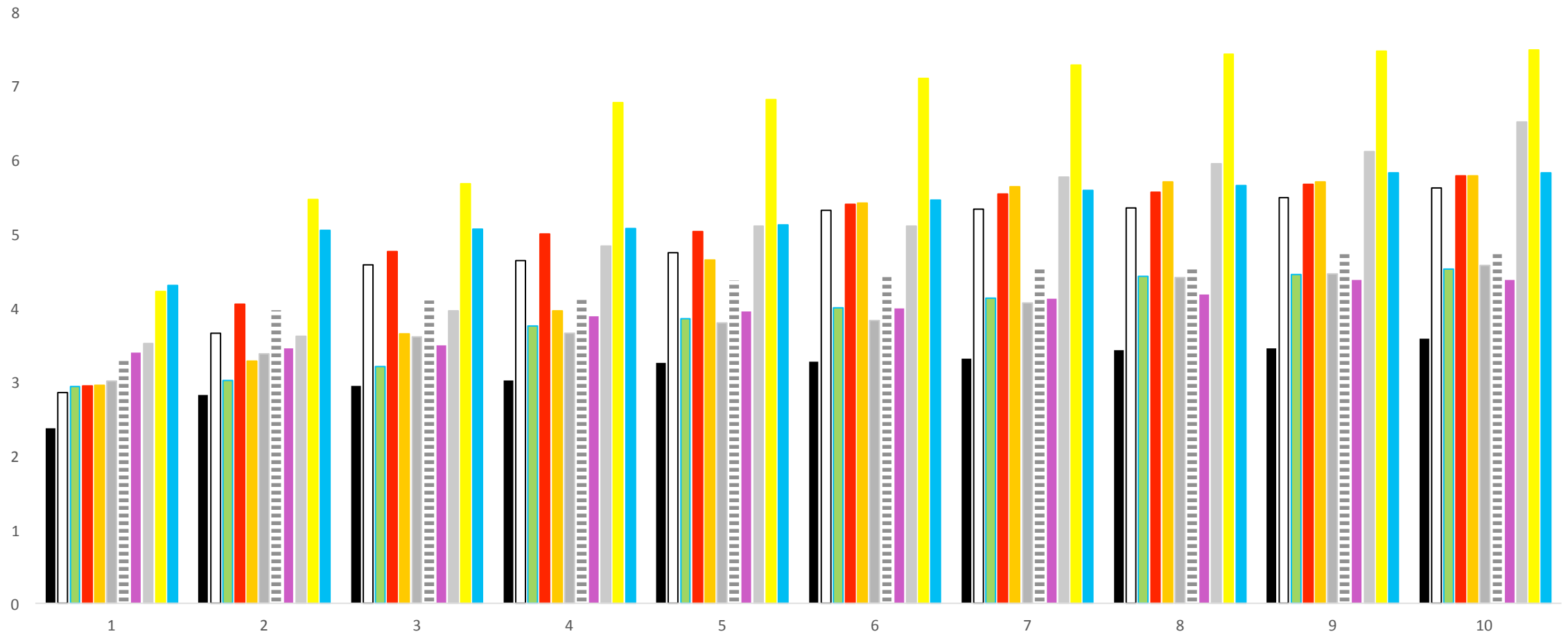


# Successive closest matches for the 10 characters with a very close closest match



- Tamburlaine (T2)
- Tamburlaine (T1)
- Hoffman
- Richard III
- Orgilus
- Ithocles
- Herod
- Antipater
- Bosola
- Flamineo

# Ten closest matches for the eleven characters speaking 8,000 words or more



Richard III
  Cicero
  Barabas
  Byron (BT)
  Face
  Henry V
  Iago
  Hamlet
  Truewit
  King Arbaces
  King Henry VIII (When You See Me)

